



IMUX G2 AND G2e DATA RECORDER / REPRODUCER

The industry standard of high speed Chapter 10 recording systems

IMUX G2/G2e is an industry-leading IRIG 106 Chapter 10 compliant data recorder and reproducer. The system can be configured as a rack-mount or portable unit. Rack-mount offerings include compact 2U and many-channel 4U configurations: industrial and ruggedized with front-panel touch-screen. Ruggedized units are suitable for mobile platforms, transport-case portability, and airborne use.

The IMUX G2/G2e has many unique features, with supporting all industry-standard telemetry signal types, the ability to record two Chapter 10 files simultaneously – local and/or remote, simultaneous playback, and on-the-fly channel adjustment. All units can be equipped with optional integrated RF receiver(s), bit synchronizers, best source selection, and real-time decom, processing and display capabilities.

KEY FEATURES

FAST

- ▶ 16 gigabit data bus
- ▶ 2 gigabit/sec throughput
- ▶ High-speed Rotary and SSD media

SCALABLE

- ▶ Many-channel support for PCM, Video, Analog, 1553, ARINC, Ethernet, IF, Time, and others
- ▶ Stand-alone recorder to fully networked systems with remote capabilities
- ▶ Custom parameter data displays, alarm and status indicators
- ▶ Best Data Engine for highest quality data stream creation
- ▶ Integrated receivers and/or bit synchronizers
- ▶ Multi-core decom and parameter processing
- ▶ Integrated Hot Mic audio output
- ▶ Data/signal status quick reviews
- ▶ Integrated GPS time support



G2eC Recorder Processing System



G2eP Rugged Portable Recorder Processing System

FLEXIBLE

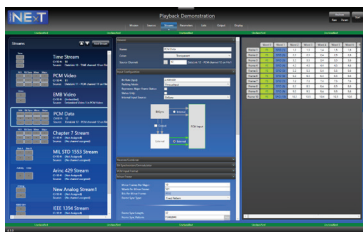
- ▶ Remote and local control
- ▶ Dynamic channel allocation
- ▶ "Strip and ship" data remote locations
- ▶ Integrated data mining and data fusion
- ▶ Save and recall individual channel setups
- ▶ User-friendly PCM spreadsheet configuration
- ▶ Integrated signal data quality status monitor
- ▶ Integrated data processing and visualization
- ▶ Simultaneous playback and recorder (SPAR)
- ▶ Throughput Data monitoring and Record operations
- ▶ Integrated TCP/IP and UDP Network Client Support
- ▶ Integrated data reformatting and production creation
- ▶ Event flags and individual channel start & stop controls
- ▶ Integrated built in test (BIT): Bit Error Rate (BER) link-test display
- ▶ Simultaneous Data Connections: local and remote media and clients
- ▶ Integrated IRIG Time Code Translator / Generator channel capability
- ▶ Front panel removable drives; RAID support; FIPS 140-2 and standard media



*G2eR Rugged Recorder Processing System w/ Touchscreen
Example Rear Panel Connector Configuration*

SYSTEM INCLUDES:

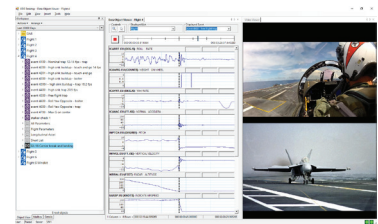
- ▶ Standard Keyboard with integrated touchpad pointing device and as-needed chassis slides and break-out signal I/O cables.
- ▶ Monitors, rack-support, and enclosures available.
- ▶ Optional NExT and Clarity software for multi-stream processing, display, network distribution, and parameter data extraction.
- ▶ Optional ODE software for secure mining and exploitation of large multi-file data sets.
- ▶ Refer separate G2/G2e configuration, NExT and ODE software specification sheets for more detailed information.



NExT Real-time Data Processing



Clarity Display Software



ODE Data Mining Software



G2-DR-PF Rev 01

DESIGN | BUILD | SUPPORT

©2020 Parraid, Inc. All rights reserved. Parraid and RUR are trademarks of Parraid, LLC. All other marks are the properties of their respective owners.

*Aggregate G2/G2e capability is configuration-dependent; G2/G2e is available with wide range of optional integrated features.

