



IMUX G3: NEXT REAL-TIME RECORDER PROCESSOR

An industry standard for high-performance network telemetry data processing

The IMUX G3 Data Recording and Real-time Processing System supports the next generation of telemetry network data multiplexing, distribution, processing and recording requirements. It combines the functionality and maturity of the Parraid IMUX G2 product line with the global support and recognition of high-performance Dell and other 3rd-party server platforms.

The IMUX G3 is an industry-leading IRIG 106 Chapter 10 compliant data recorder-processing platform. The flagship G3 offering is a 2U rack-mount unit but can be provided in a variety platform configurations. G3 stands alone with its depth and range of standard NExT software processing support for TMoIP network data sources in addition to other industry-standard serial, bus, and packet signal input types.

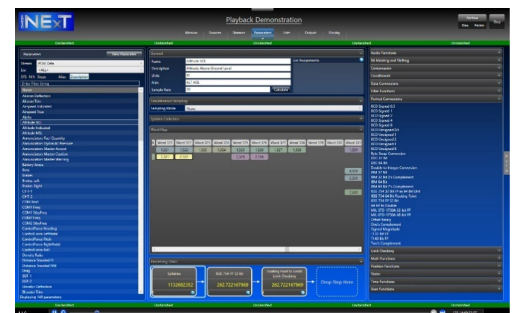
G3 may be configured with terabytes of RAID data storage for both real-time Chapter 10 raw data recording, and processed data storage, at different media target locations. NExT processing can support the most complex signal definitions and enables operators to adjust databases, as needed, to support changing signal characteristics and requirements. NExT software includes data extraction, distribution, and simulation utilities, and includes unlimited local and client display support for real-time and playback operation.



KEY FEATURES

FAST

- ▶ 32 gigabit data bus
- ▶ 4 gigabit/sec throughput
- ▶ High-speed Rotary and SSD RAID media
- ▶ Multiple 1Gbps and 10Gbps Ethernet ports
- ▶ Comprehensive NExT Data Processing
- ▶ Integrated Best Data Engine
- ▶ TMoIP 218-20 Support

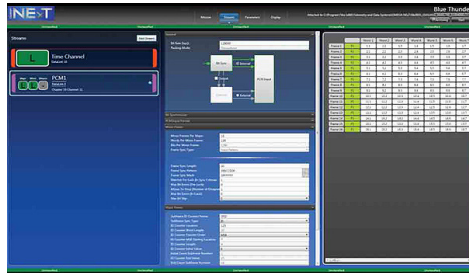


OMEGA-NExT supports all types of raw, parametric, derived, conditional, custom, and compression processing

G3-INP-PF Rev 03

SCALABLE

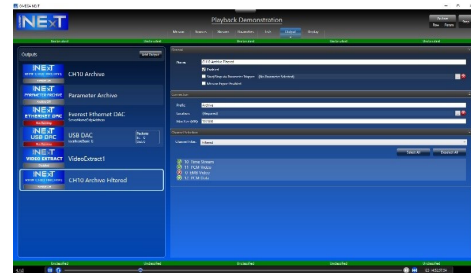
- ▶ Few to many input data types: TMoIP, IRIG Ch4 & Ch7 PCM, Video, Analog, MIL-STD & IRIG Ch8 1553, ARINC, UART Ch10, Custom Ethernet, Time, and User Defined
- ▶ Multiple independent parent signals to multiple-levels of embedded multiplexed data streams
- ▶ Simultaneous asynchronous programmable output PCM, Ethernet, and other types
- ▶ Stand-alone front-end to remote-controlled range-wide system network
- ▶ Custom parameter data displays, alarm, status indicators – unlimited clients
- ▶ Best Data Engine for highest quality data stream: display, distribution, archival, & product creation
- ▶ Many-core decom, parameter processing, and network distribution
- ▶ Integrated GPS time and Hot Mic audio output



NExT supports any input signal type for real-time and file playback, product generation, and network distribution.

FLEXIBLE

- ▶ Local and remote control: extensive APIs
- ▶ Integrated data processing & visualization: comprehensive native & custom conversion functions
- ▶ Integrated data mining & data fusion
- ▶ Simultaneous data monitoring, processing, distribution, and record operations
- ▶ Post mission data processing client
- ▶ Integrated data reformatting and product creation
- ▶ Integrated IRIG Time Code Trans / Gen channel
- ▶ Front panel removable drives; RAID support: FIPS 140-2 and standard media
- ▶ Run-time & custom builder display clients
- ▶ Integrated TCP/IP and UDP network client interfaces - native and custom packet formats
- ▶ Data simulation client
- ▶ USB and Ethernet DAC output



NExT supports a variety of programmable native and custom parametric data, signal, and simultaneous outputs

SYSTEM INCLUDES:

- ▶ Standard Keyboard with integrated touchpad pointing device, as-needed chassis slides and break-out signal I/O cables.
- ▶ NExT Processing – with TMoIP and BDE support, CLARITY Data Display and Builder, FOCUS Data Distribution, ORIGIN Data Simulation, and INSIGHT Data Extraction for multi-stream processing, display, network distribution, and parameter data extraction, real-time and file playback operation.
- ▶ Optional ODE software for secure mining and exploitation of large multi-file data sets – evaluation software.*
- ▶ Application-specific customization.
- ▶ Monitors, rack-support, and enclosures available.
- ▶ Refer separate NExT and G3 specification sheets for more detailed information.

*Subject to Parraid approval.



OMEGA-NExT Real-time Processing Software Suite



G3-INP-PF Rev 03

DESIGN | BUILD | SUPPORT

©2020 Parraid, Inc. All rights reserved. Parraid and RUR are trademarks of Parraid, LLC. All other marks are the properties of their respective owners.

