



S-5000e MULTI-STREAM DATA PROCESSING

A high-performance telemetry processing, display, archive, and distribution system

The S-5000e features the powerful integrated OMEGA NEX™ real-time processing software suite. With OMEGA NEX real-time processing software, the S-5000e enables support for the most complex IRIG Ch4 (Class 1 and 2), Ch7, Ch8, TmNS, and IRIG 218-20, PCM-embedded video and audio signal inputs. OMEGA NEX provides comprehensive in-depth parameter processing, raw Chapter 10 and processed data archiving, custom data distribution (including 3rd-party display support), and flexible APIs. The S-5000e includes extensive post-test playback, file data reduction, analysis, and extraction support. Optional ODE Data Mining software facilitates rapid scrutiny of multi-gigabyte files. Receiver Control and Spectral Display software is optionally available for receiver support.

The S-5000e, available in rackmount 2U and 4U system configurations, provides multi-stream processing support for up to 40 simultaneous serial PCM, TmNS, and TMOIP data channels. BNC breakout cables are included with rackmount 2U and Industrial 4U configurations. Rugged rackmount 4U configurations may include a combination of BNC bulkhead and BNC break-out cables for signal I/O. PCM embedded asynchronous data streams and Hot-Mic audio outputs can be made available for each serial PCM input.

The S-5000e may be configured with independently programmable serial PCM inputs and PCM outputs for file playback, simulation, and/or real-time encoding support. PCM input support may include optional tunable bit syncs and/or multi-band receiver modules. Additional input signal support may include standard definition and HD video; TMOIP, Ch10, and Custom Ethernet; tri-band UART; MIL-STD-1553 and ARINC 429, and others.

NEX Foundation licensing with Clarity Display software is provided with an S-5000e for signal and raw data status monitoring, device configuration and control, and data archive support. Standard or Professional levels of NEX licensing are typically included for parameter processing, data distribution, simulation, and analysis. With NEX real-time processing software, the S-5000e enables support for the most complex IRIG Ch4 (Class 1 and 2), Ch7, and Ch8, PCM-embedded video and audio signal inputs. Receiver Control and Spectral Display software may also be included for receiver support.

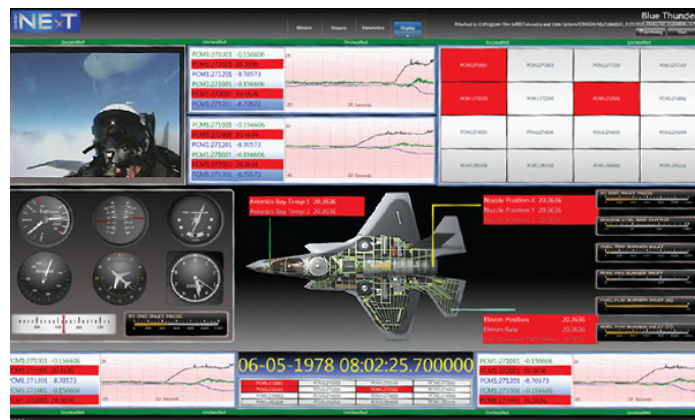
KEY FEATURES

POWERFUL

- ▶ A high-performance telemetry processing, display, archive, and distribution system
- ▶ Real-time multi-stream processing, complex formats
- ▶ Direct signal and PCM-embedded audio-video inputs
- ▶ High-speed data throughput and display resolution
- ▶ Parametric processing, display, archiving, analysis, and data distribution.

SCALABLE

- ▶ PCM, Video, UART and other signal types
- ▶ Up to 40 simultaneous input-channel signal processing
- ▶ Multi-signal Ethernet input and output capability
- ▶ Industry-standard IRIG-106 (native) and custom packet format I/O



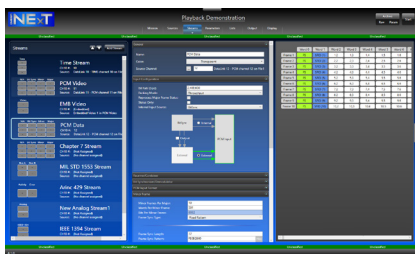
FLEXIBLE

- ▶ Portable, 2U and 4U Systems
- ▶ Programmable A/B/G IRIG Time I/O
- ▶ Simultaneous multi-stream Ethernet output: "strip and ship" application
- ▶ Baseband only and combinations of bit sync / receiver PCM configurations
- ▶ Hot-Mic Audio outputs, PCM embedded video processing with software display
- ▶ PCM input: IRIG Ch4, Ch7*, Ch8, multiple embedded asynchronous frames
- ▶ Stream and parameter-based TCP/IP and UDP Ethernet client support
- ▶ Local stand-alone multi-display platform or network server to display & processing clients
- ▶ Clarity Display and Builder software provides comprehensive data visualization
- ▶ Industry standard format support and programmable custom I/O processing
- ▶ Front panel removable drives; RAID support, FIPS 140-2 and standard media
- ▶ Optional OMEGA NEXt™ BDE/Best Source Selection for creation of highest quality data stream
- ▶ Optional ODE Data Mining & Analysis software, multi-file data event and trend examination
- ▶ Refer to OMEGA NEXt™ Software Suite specification sheet for details of integrated utilities and capabilities

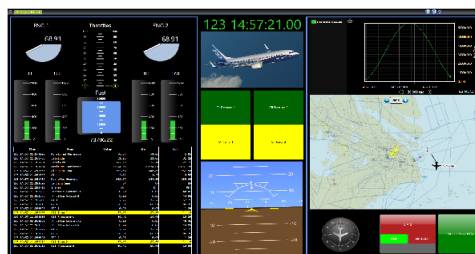


SYSTEM INCLUDES

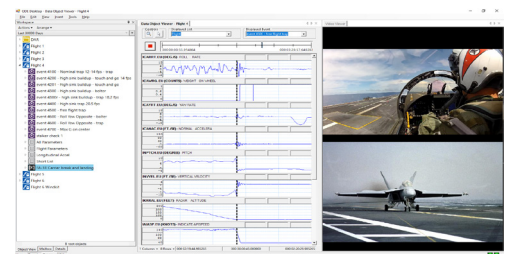
- ▶ Standard keyboard with pointing device
- ▶ As-needed chassis slides and break-out signal I/O cables
- ▶ OMEGA NEXt™ Software Suite: Standard or Professional
- ▶ Optional ODE software for secure mining and exploitation of large multi-file data sets
- ▶ Monitors, rack-support and enclosures available



NEXt Real-time Data Processing



Clarity Display Software



ODE Data Mining Software

*Requires NEXt Professional Licensing for processing possible non-PCM signal types comprising Ch7 PCM input stream.



DESIGN | BUILD | SUPPORT

©2020 Parraid, Inc. All rights reserved. Parraid and RUR are trademarks of Parraid, LLC. All other marks are the properties of their respective owners.

Parraid, LLC...A Small Business!
Phone: +1.301.690.0690

44150 Smartronix Way • Suite 100 • Hollywood, MD 20636
sales@parraid.com • www.parraid.com • international_sales@parraid.com

